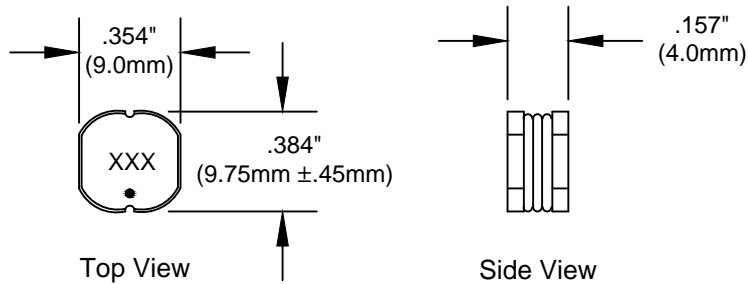


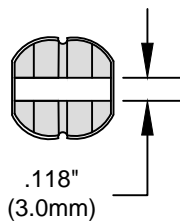
- ECONOMY INDUCTOR SERIES SUITABLE FOR SMPS AND RF APPLICATIONS.
- EXCELLENT PERFORMANCE IN A SMALL PACKAGE.
- LOW ABOVE BOARD HEIGHT (.170/4.3mm MAXIMUM).
- WIDE RANGE OF INDUCTANCE VALUES 10 μ H - 560 μ H AND HIGH CURRENT RATINGS 320mA - 2.38ADC.



Tolerance : ± 0.3 mm unless otherwise specified.

"•" On top of Core Identifies Start

XXX = ID# is Inductance Value in Microhenries



Bottom View

REVISIONS			
DATE	REV	DESCRIPTION	APPV'D
04/26/02	-1	corrected tolerance, chg'd dim tol. to ref.	G.G.
09/27/02	-2	chg'd ele.specs. & dim. to meet alt. source	G.G.
10/26/15	-3	Revised Max DCRs	G.G.

Electrical Parameters

ID#	Max Dcr :	L	Idc Max
100	0.053 Ω	10.0 μ H $\pm 20\%$	2.38 A
150	0.070 Ω	15.0 μ H $\pm 20\%$	1.87 A
220	0.088 Ω	22.0 μ H $\pm 20\%$	1.60 A
330	0.134 Ω	33.0 μ H $\pm 20\%$	1.26 A
470	0.179 Ω	47.0 μ H $\pm 20\%$	1.10 A
560	0.199 Ω	56.0 μ H $\pm 10\%$	1.01 A
680	0.245 Ω	68.0 μ H $\pm 10\%$	0.91 A
820	0.292 Ω	82.0 μ H $\pm 10\%$	0.85 A
101	0.365 Ω	100.0 μ H $\pm 10\%$	0.74 A
151	0.544 Ω	150.0 μ H $\pm 10\%$	0.61 A
181	0.664 Ω	180.0 μ H $\pm 10\%$	0.56 A
221	0.755 Ω	220.0 μ H $\pm 10\%$	0.53 A
271	0.949 Ω	270.0 μ H $\pm 10\%$	0.45 A
331	1.186 Ω	330.0 μ H $\pm 10\%$	0.42 A
471	1.619 Ω	470.0 μ H $\pm 10\%$	0.35 A
561	2.016 Ω	560.0 μ H $\pm 10\%$	0.32 A



CUSTOM ENGINEERING MAGNETIC COMPONENTS
 Johnsburg, Illinois
 3521 N. Chapel Hill Rd. / McHenry, Illinois 60051

SCALE: None

APPROVED BY:

DRAWN BY Tjk

DATE: 11-08-01

Theodore J Klotz

REVISED

Mechanical - Electrical for Surface Mount SMI 3 Inductor

DRAWING NUMBER
SMI 3 -3